

SPANSET Xtracta
FIXED AND
SEMI-PERMANENT
DAVIT SYSTEMS

Technical Data Sheet



SpanSet UK Ltd

Telford Way
Middlewich
Cheshire
CW10 0HX

Telephone

+44(0)1606 737494

Fax

+44 (0)1606 737502

Email

customerservices@spanset.co.uk

Internet

www.spanset.co.uk

SpanSet Xtracta 600mm Davit, Mast and Base Kit



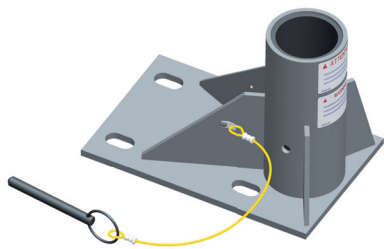
Code	Description	Min Reach	Max Reach	Max Height
SPXT24	600mm Davit, Mast and Base kit	385mm	601mm	2992mm
SPXTIN2210	600mm Davit Arm	—	—	—
SPXTIN2003	Standard Mast	—	—	—
SPXTIN2044	380mm Mast Extension	—	—	3372mm
SPXTIN2109	450mm Mast Extension	—	—	3442mm
SPXTIN2045	600mm Mast Extension	—	—	3592mm
SPXTIN2005	Stainless Steel Floor Adapter	—	—	—

SPXTIN2210 Davit Arm

Maximum Working Load with Mast SPXTIN2003	164kg
Maximum Capacity with lifeline winch and Mast SPXTIN2003 Position 1 & 2	16kN
Maximum Capacity with Material Handling with Mast SPXTIN2003 Position 3	8kN
Maximum Capacity at Anchor Point	22kN
Weight	15kg
Length When Opened	203cm
Length When Closed	132cm
Extension and Guide Tubes	Aluminium
Davit Arm Link	Aluminium
Anchorage Hooks	Stainless Steel
Hardware	Zinc Plated Steel
Guide Tube Sliders	Ultra High Molecular-weight Polyethylene
Pulley	Black Acetal
Finish	Security Yellow

SPXTIN2003 Mast

Maximum Working Load with Davit Arm SPXTIN2210	164kg
Maximum Capacity with Davit Arm SPXTIN2210	16kN
Weight	10kg
Mast Material	Aluminium
Anchorage Plates	Aluminium
Finish	Security Yellow



SPXTIN2005 Stainless Steel Floor Adapter

Maximum Working Moment	0.97kN
Maximum Moment	13.5kN
Weight	10kg
Plate and Gussets	Stainless Steel
Sleeve	Stainless Steel
Sleeve Bearing	PVC Pipe
Pin	Zinc Plated Stainless Steel
Lanyard	Nylon Covered Steel Cable



SPXTIN2044 380mm Mast Extension

Maximum Working Load with Davit Arm SPXTIN2210	164kg
Maximum Capacity with Davit Arm SPXTIN2210	16kN
Weight	9kg
Cylinder and Sleeve	Steel DOM 1026
Pin	Zinc Plated Stainless Steel
Lanyard	Nylon Covered Steel Cable
Finish	Security Yellow



SPXTIN2109 450mm Mast Extension

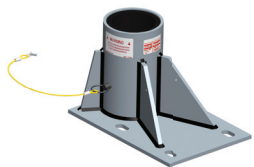
Maximum Working Load with Davit Arm SPXTIN2210	164kg
Maximum Capacity with Davit Arm SPXTIN2210	16kN
Weight	11kg
Cylinder and Sleeve	Steel DOM 1026
Pin	Zinc Plated Stainless Steel
Lanyard	Nylon Covered Steel Cable
Finish	Security Yellow



SPXTIN2045 600mm Mast Extension

Maximum Working Load with Davit Arm SPXTIN2210	164kg
Maximum Capacity with Davit Arm SPXTIN2210	16kN
Weight	12kg
Cylinder and Sleeve	Steel DOM 1026
Pin	Zinc Plated Stainless Steel
Lanyard	Nylon Covered Steel Cable
Finish	Security Yellow

SpanSet Xtracta 1200mm Davit, Mast and Base Kit



Code	Description	Min Reach	Max Reach	Max Height
SPXT48	1200mm Davit, Mast and Base Kit	774mm	1208mm	2224mm
SPXTIN2237	1200mm Davit Arm	—	—	—
SPXTIN2240	Mast	—	—	—
SPXTIN2238	Stainless Steel Floor Adapter	—	—	—
SPXTIN2238	Stainless Steel Floor Adapter	—	—	—

SPXTIN2237 1200mm Davit Arm

Maximum Working Load with Mast SPXTIN2240	164kg
Maximum Capacity with Mast SPXTIN2240	16kN
Maximum Capacity at Anchor Point	22kN
Weight	22.5kg
Extension and Guide Tubes	Aluminium
Anchorage Hooks	Stainless Steel
Hardware	Zinc Plated Stainless Steel
Guide Tube Sliders	Ultra High Molecular-weight Polyethylene
Pulley	Black Acetal
Finish	Security Yellow

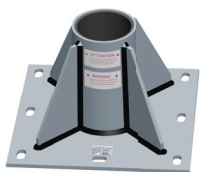
SPXTIN2240 Mast

Maximum Working Load with Davit Arm SPXTIN2237	164kg
Maximum Capacity with Davit Arm SPXTIN2237	16kN
Weight	11kg
Mast	Aluminium
Handle	Aluminium
Finish	Security Yellow

SPXTIN2238 Stainless Steel Floor Adapter

Maximum Working Moment	1.9kN
Maximum Moment	19.5kN
Weight	16kg
Plate and Gussets	Stainless Steel
Sleeve	Stainless Steel
Sleeve Bearing	Acetal Black Delrin
Pin	Zinc Plated Stainless Steel
Lanyard	Nylon Covered Steel Cable

SpanSet Xtracta 2400mm Davit, Mast and Base Kit



Code	Description	Min Reach	Max Reach	Max Height
SPXT96	2400mm Davit, Mast and Base Kit	1526mm	2428mm	2786mm
SPXTIN2197	2400mm Davit Arm	—	—	—
SPXTIN2199	Mast	—	—	—
SPXTIN2201	Stainless Steel Floor Adapter	—	—	—

SPXTIN2197 Davit Arm

Maximum Working Load with Winch and Mast SPXTIN2199 Position 1 or 2	164kg
Maximum Capacity Material Handling with Mast SPXTIN2199 Position 1 or 2	16kN
Maximum Capacity at Anchor Point	22kN
Weight	63kg
Length When Opened	203cm
Length When Closed	132cm
Extension and Guide Tubes	Aluminium
Davit Arm Link	Aluminium
Anchorage Hooks	Stainless Steel
Hardware	Zinc Plated Steel
Buide Tube Sliders	Ultra High Molecular-weight Polyethylene
Pulley	Black Acetal
Finish	Security Yellow

SPXTIN2199 Mast

Maximum Working Load with Davit Arm SPXTIN2197	164kg
Maximum Capacity with Davit Arm SPXTIN2197	16kN
Weight	15.5kg
Mast	Aluminium
Handle	Aluminium
Finish	Security Yellow

SPXTIN2201 Stainless Steel Floor Adapter

Maximum Working Moment	3.9kN
Maximum Moment	39kN
Weight	30kg
Plate and Gussets	Stainless Steel
Sleeve	Stainless Steel
Sleeve Bearing	PVC Pipe

Training Courses

Height Safety for Industry

Work at Height on Vehicles

Industrial Rope Access

Safe Lifting & Rigging

Load Restraint

Height Safety for Police and the

Emergency Services

Telecoms and Utilities

www.spanset.co.uk/products/safety-management/training-uk.html

SpanSet Accreditations

ISO 9001:2008 Certified Quality
Management System

ISO 14001:2004 Certified Environment
Management System

OHSAS 18001:2007 Certified Occupational
Health and Safety Management Systems

arqiva



www.spanset.co.uk